

HIAS APPLICATION FORM

I/we wish to join Hampshire Industrial Archaeology Society.

Full name(s):

Address:

.....

Post code:

Telephone number:

Email:

Type: ORDINARY | JOINT | REDUCED | CORPORATE

I enclose a cheque payable to HIAS for £

Signature:

Date:

GIFT AID

I would like Hampshire Industrial Archaeology Society (registered charity number 276898) to reclaim the tax on any donation or subscription payment I make on the date below or make hereafter, until I notify you otherwise. I pay UK income tax or capital gains tax each tax year (6 April to 5 April) at least equal to the tax that all the Charities and Community Amateur Sports Clubs to which I donate will reclaim on my gifts for that tax year. I understand that other taxes such as VAT and Council Tax do not qualify. I will notify you if I no longer pay sufficient tax, or change my address.

Signature:

Date:

HOW TO JOIN

To be a member of HIAS you do not need to have any prior knowledge of industrial archaeology – anyone who is interested is welcome. The subscription rates are listed below. If you would like to join us please complete the form opposite and return it to the membership secretary:

Keith Andrews

**13 Ashley Close, Winchester, SO22 6LR
(Telephone: 01962 880917)**

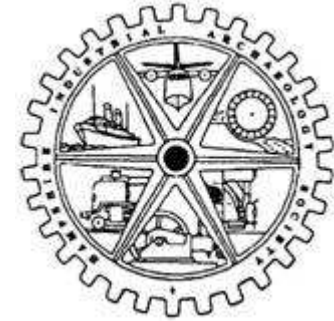
Gift Aid: As a charity, HIAS can recover tax paid on subscriptions from the government. All you have to do is make a declaration confirming that you pay sufficient income tax – more than your charitable donations. It's simple and doesn't cost you anything but means that HIAS can reclaim £4.50 on each ordinary subscription and £6.25 on joint ones. You only have to make the declaration once, and can cancel it at any time. (For joint membership, only one of you should sign.)

Your details, including your subscription payment records will be stored on a computer. They will not be disclosed to anyone outside the HIAS committee without your permission. If you make a Gift Aid Declaration they may be disclosed to HM Revenue & Customs.

SUBSCRIPTION RATES

- **Ordinary £18** — one person
- **Joint £25** — two persons at the same address, sharing notices and publications
- **Reduced £15** — one or more persons at the same address, sharing notices and publications, but not normally attending meetings because of infirmity or distance from Hampshire
- **Corporate £18**

The membership year runs from November to the following October



HIAS

Hampshire Industrial Archaeology Society

Registered Charity Number 276898

If you are interested in
learning more about our
industrial heritage
then why not join us?

www.hias.org.uk

THE SOCIETY

HAMPSHIRE INDUSTRIAL ARCHAEOLOGY SOCIETY (HIAS) was founded in 1968 as *Southampton University Industrial Archaeology Group* by members who had attended classes held by Dr Edwin Course at the University Extra-Mural Department and who wished to continue and develop their interest in industrial archaeology. Having ceased its affiliation to Southampton University, and to better reflect its wide scope of interest, the name was changed to HIAS in 2002.

The particular interests of HIAS's members cover the whole spectrum of IA, from canals and railways to mining, from steam engines to sewing machines. Our members are active in other societies including groups studying and working on canals, buses and aeroplanes.

ASSOCIATED GROUPS

HIAS is closely associated with several local IA organisations: Hampshire Mills Group, The Solent Steam Packet Ltd (*SS Shieldhall*), Tram 57 Project, Twyford Waterworks Trust.

We exchange newsletters and journals with other industrial archaeology societies around the country, and with local museums.

HIAS is affiliated to The Association of Industrial Archaeology, the Council for British Archaeology, Southampton Heritage Federation and the South-East Region Industrial Archaeology Conference.

MEETINGS, NEWSLETTERS, VISITS

Lecture meetings are held monthly on Mondays at 7.45pm in

**Underhill Centre, St John's Road
Hedge End
Southampton SO30 4AF**

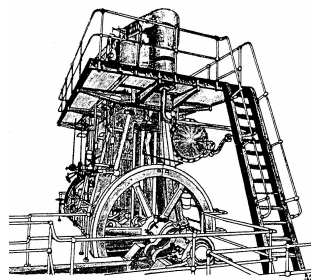
They cover a wide range of topics of interest to our members, and are usually illustrated with photos or film and, sometimes, sound recordings or artefacts. Everyone is welcome at meetings, whether members or not; there is no charge.

Members receive a newsletter *Focus on Industrial Archaeology* twice yearly, and an annual *Journal* with longer articles on IA topics. There are libraries of books and DVDs which are free for members to borrow.

From time to time HIAS organises outings and field trips to sites, museums, or industrial buildings in Hampshire and further afield. We attend any appropriate conferences or study days in our region and take our turn at organizing them.

WEB SITE – www.hias.org.uk

Our frequently updated web site has lots more information about HIAS.



RECORDING, SURVEYING, RESTORATION

HIAS has been involved in a series of surveys of sites, machinery, and buildings, including drawings and photography, the results of which have been published as books or in our *Journal* or newsletter. As many buildings have been or are now being demolished, converted, or otherwise lost, our records have been archived in Southampton University Hartley Library and the Hampshire Record Office in Winchester.

HIAS has also been involved with the physical side of industrial archaeology: cleaning, repairing, and restoring a variety of buildings and machinery.

PUBLICATIONS

HIAS has published a number of books over the years, some of which are now out-of-print. Our publications are sold to bookshops, at conferences, open days, and through the post, and are also sent to libraries in Hampshire. To order publications, contact

Publications Officer
eleanor.yates@ntlworld.com
Telephone: 01962 852594

Publications currently available are:

Ice and Ice-houses
Seaplanes and Flying Boats of the Solent
A guide to the IA of Hampshire
The Changing Railway Scene in Hampshire
Souvenir of Southampton Docks
Hampshire Farmsteads in the 1980s
Itchen Navigation – updated edition (2011) with modern photographs and a new map